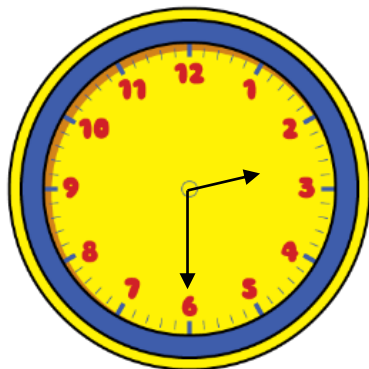




Year 2 - Summer - Block 3

Time



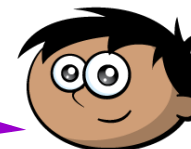
Who is telling the time correctly?



The time is half past 6

Dora

The time is half past 3



Amir



The time is half past 2

Alex

Can you spot the mistake they've made?

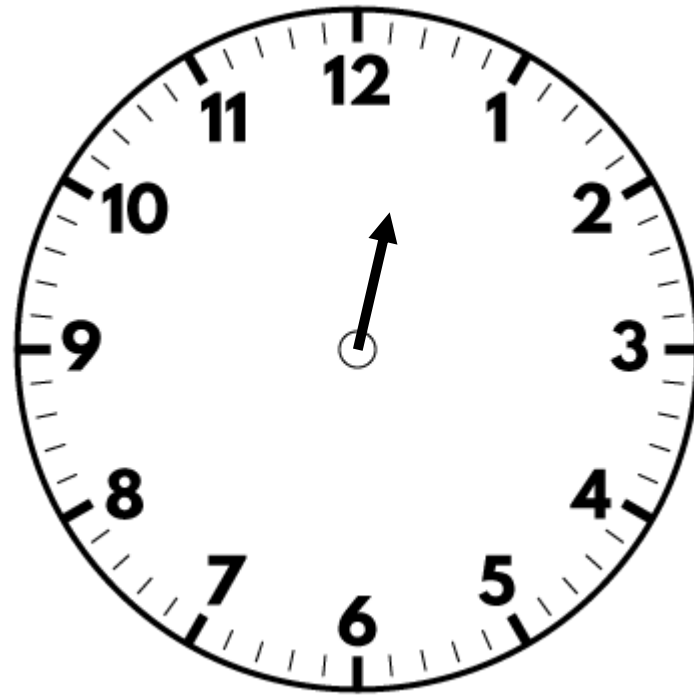


It is half past 11 so the hour hand
should be on the 11

Alex

Is Alex correct?

Explain your reasoning



Oh no! The minute hand has fallen off the classroom clock!

Lunchtime is at 12:00

Have the children missed their lunchtime?



Quarter past is always later than quarter to.

Do you agree with Teddy?

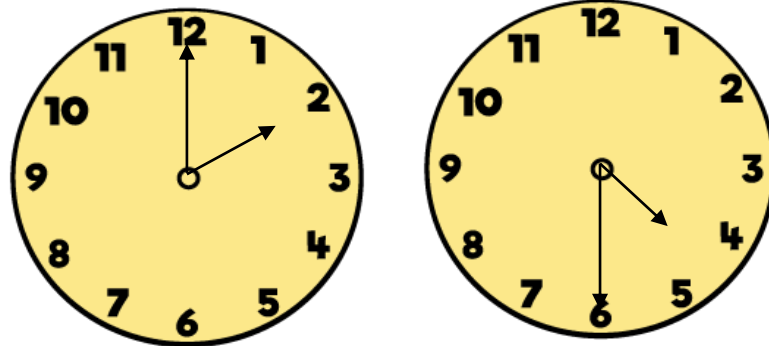
Explain why.

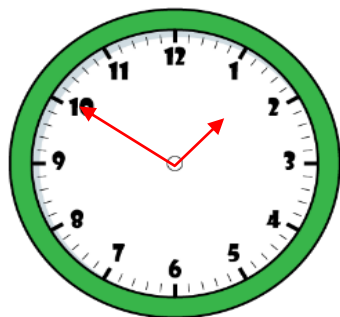
How many quarters of an hour are between 7 o'clock and 9 o'clock.

Explain how you found the answer.

The train to Blackpool leaves at quarter past and quarter to every hour.

Make a list of the times of the trains Oliver can catch if he gets to the train station between 2 o'clock and half past 4





It is ten to one.

Dora

It is ten past ten.



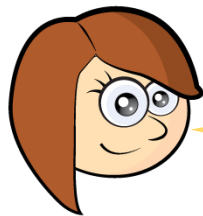
Amir



It is ten to two.

Alex

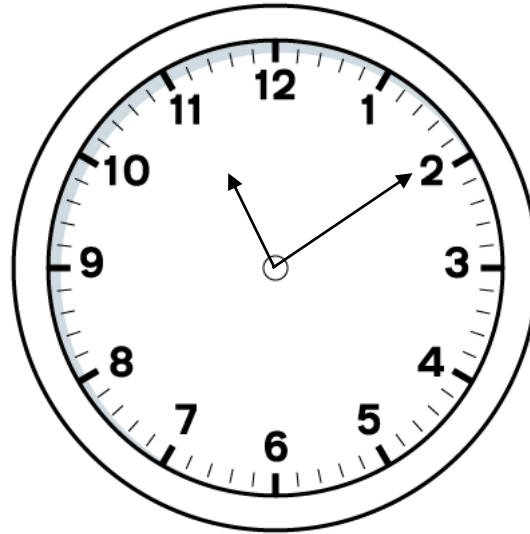
Who is correct? Explain your answer.



Four lots of 5 minutes is
the same as quarter of an
hour.

Do you agree with Rosie? Explain why.

Sophia starts her Maths questions at 10 past 11



Each question takes her 5 minutes to complete.
She completes 7 questions.

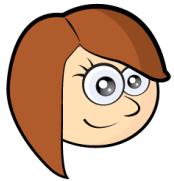
What time does Sophia finish her Maths questions?
Explain how you found the answer.



Tommy

There must be 12 hours in a day because we start from midnight and go up to 12 o'clock then start again from 1

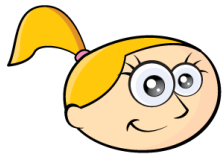
Do you agree with Tommy? Explain why.



Rosie

If you add three hours onto the current time, the amount of minutes to/past the hour do not change.

Do you agree with Rosie? Prove it.



The day starts at 12 o'clock
and ends at 12 o'clock.

Here are Eva's calculations for working out how many hours there are in a day.

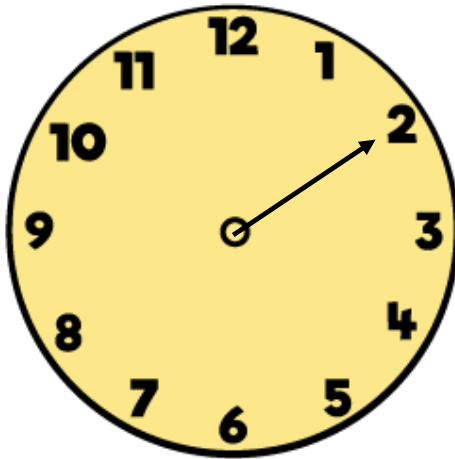
12	6	12	6	12
1	7	1	7	
2	8	2	8	
3	9	3	9	
4	10	4	10	
5	11	5	11	

I counted them up, and there
are 25 hours in a day.

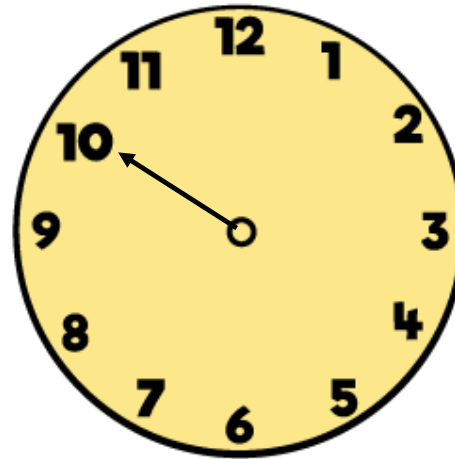


What mistake has Eva made?

Oh no! The hour hand has fallen off the class clock!



Start



End

The clock shows the start and end time of a film.
How long do you think the film lasted?

Aimee is planning her birthday. She wants to plan something to do from 9am to 5pm.

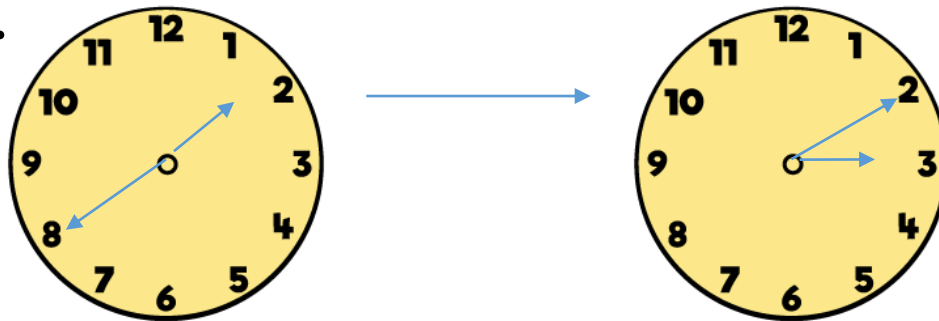
Here are the things she wants to do:

- Visit the zoo (3 hours)
- Go to Pizza Palace (1 hour and a half)
- Have breakfast (half an hour)
- Play party games (1 hour)
- Watch a film (2 hours)

Create a timetable for Aimee's day.

Compare it to your friends – is it the same?

The clocks show the start and end time of the film Super Dog.



The film Crazy Cat starts at quarter past 1 and ends at quarter to 3

Teddy says,



Super Dog must be the longest film, because it ends the latest.

Do you agree with Teddy?
Explain why.

Rosie has an hour for her lunch break.

If she takes 10 minutes to eat her lunch, does she have enough time to complete all of the playground activities?

Activity	Duration
Skipping	7 minutes
Ball skills	10 minutes
Treasure hunt	21 minutes
Trim trail	19 minutes

How do you know?