

Great Barford Church of England Primary Academy

'Growing together through learning, friendship and worship'



Great Barford Church of England Primary Academy

Silver Street
Great Barford
Bedford
Bedfordshire
MK44 3JU

Telephone: 01234 870342

Nursery

*(Available when your child
is 2 years 9 months)*

Head Teacher:

Mrs S Evans

Chair of Academy Council:

Mrs A Lovesey



Welcome to Our School



Mrs S Evans
Head Teacher

Welcome to our nursery brochure. We hope that you find it a useful source of information as an introduction to the many and varied experiences enjoyed at Great Barford Church of England Primary Academy.

We are very proud of our school. We are fully inclusive and offer an exciting and high quality education for all. Our curriculum is rich, broad and relevant. Our environment is nurturing and caring.

We work continuously to develop all areas of school life and ensure that we continue to provide the very best education and opportunities for all children and families.

Thank you for taking the time to read our school brochure.
If you require any further information please visit our website

www.gbpa.org.uk

or contact the school office by phone on
01234 870342.

'Amazing things happen here'



Our commitment

At Great Barford Church of England Academy, our key aim is to foster a life long love of learning by providing an exciting curriculum that reflects the children's own interests.

The experiences that the children in our nursery have, build the foundations for future learning within the education system and wider world.

We provide a safe and secure learning environment, which allows the children to develop in confidence and gain independence.

Within the nursery we develop the children's skills through play based opportunities, carpet time and adult led activities. We carefully plan activities to develop children's confidence, learning and understanding. We are passionate about learning through outside play and operate a free flow system between the inside and outside learning environments.



'We laugh and learn together'



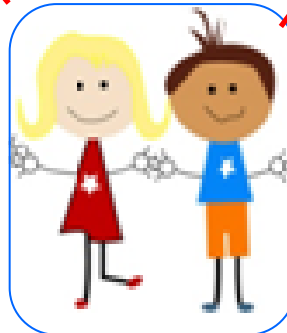
Our Staff



Mrs Adams
Teaching Assistant



Mrs Day
Nursery Leader



Mrs Marshall
Teaching Assistant



Miss Turnbull
Teaching Assistant

‘Working together to support our children’



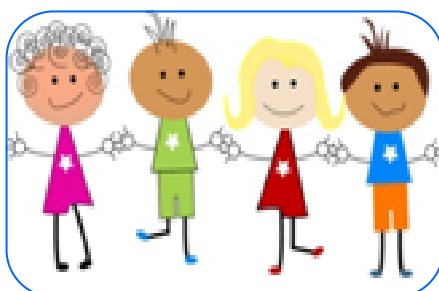
Support Staff



Mrs Shuttleworth
Accounts Assistant &
Wraparound Care
Administrator



Mrs Evans
Head Teacher



Mrs Meadows
School Administrator
Attendance Officer



Mrs Ingram
Business Manager



Mrs Gower
Family Support Officer

'Here to help'



In Nursery we ...



Enjoy exciting and stimulating learning opportunities



Encourage confidence and independence



Embrace new challenges



Learn together



Learn in a safe, caring and welcoming environment

'Embracing new challenges'



Curriculum

In our nursery we aim to provide a caring learning environment where all children can acquire the skills which are required to progress in their learning.

Communication and Language

We support children's understanding, their listening skills and their speaking skills by modelling language and providing opportunities for talk. We also plan for listening opportunities by listening to stories, playing listening games and by listening to music. We have daily circle time sessions and embrace opportunities for singing.



'Developing our skills'



Curriculum

Personal, Social and Emotional Development

We provide support for all of our children to develop skills in turn-taking and sharing. We also plan opportunities for children to apply these skills independently. Each day we join together for snack, in which we celebrate good manners and reflect upon that days learning. We are passionate about celebrating the children's achievements and love hearing about what the children have achieved at home.



Physical Development

Our outside space provides the children with the opportunity to develop their gross motor skills and co-ordination through riding bikes and scooters; and playing with balls, hoops, skittles and stilts. The children also have a weekly PE session in the hall. We support the children's fine motor skills through a variety of activities including playdough, lacing and threading, painting and cutting.

‘Celebrating achievements’



Curriculum

Literacy

We foster a love of reading and sharing books with the children during whole class sessions, as well as individually and within small groups. We also support children's literacy development through role play and by providing mark making opportunities. We support children to be able to write their own name by the end of nursery and encourage children to ascribe meanings to the marks that they make. In our nursery we provide the foundations for learning phonics by supporting listening and sound discrimination. We also introduce letter sounds (phonemes) and support children to hear sounds in words and to orally blend sounds to make words.



Numeracy

We support children to develop an understanding of maths and number through stories, songs, games and imaginative play. The children experience practical activities relating to counting, sorting, matching, patterns, shapes, space and measure. We give opportunities to use and experiment with numbers, shape and measure to help them to become confident mathematicians .

‘Fostering a love of learning’



What we wear

Uniform

To promote a sense of school identity, children in nursery wear a school sweatshirt. These are available to purchase online at:

<http://www.pbuniformonline.com>

We ask that children wear trouser bottoms that they can get on and off easily. Children need sensible and robust shoes that are suitable for inside and outside play. Velcro is the best option so that children can take their shoes on and off by themselves. We also ask that children have a pair of wellies that they keep in school on their peg. Please ensure that your child's name is put inside all clothing and footwear to avoid confusion.

We love playing and learning outdoors so children need to wear a coat for cold and wet weather. It needs to be warm and waterproof.



We ask that children keep a spare set of clothes in a drawstring bag on their peg, in case they have an accident. Although we always support children to wear appropriate clothing for messy play, accidents do sometimes happen. We do also keep a small stock of spare clothes in the nursery. If your child has been given a change of clothing by nursery staff, we would greatly appreciate it if you wash and return these items as soon as possible.

'Playing inside and outside'



How we Learn

Children in the nursery learn by playing and exploring. They are encouraged to be active and creative, and to use critical thinking skills in both the indoor and outdoor setting. We embrace opportunities for messy play as we believe that it makes an enormous contribution to a child's learning and development.

The learning environment

We have a newly converted nursery area with a dedicated outside nursery area. The Nursery children also have opportunities to access the school field and trim trail, the hall and gym for PE lessons and other enrichment opportunities, the food technology room and the library.

'Learning in all different environments'



Structure for school day

8:45-9:10am	Registration
9:10-9:25am	Carpet time
9:25-10:30am	Free flow
10:30-10:45am	Snack
10:45-11:25am	Free flow
11:30-11:45am	Carpet time
11:45am-12:15pm	Lunchtime
12:15-1:00pm	Outside play
1:00-1:15pm	Carpet time
1:15-2:45pm	Free flow
2:45-3:00pm	Circle time
3:00-3:15pm	Story

Although the children are not statutory school age, our nursery provides the first steps to support children to become secure in daily routines. We therefore ask that children arrive promptly for their session. We feel that it is important for children to attend regularly and to attend the sessions that they are booked in for. It is important for children to be picked up on time from their sessions as they can become anxious and are also keen to share what they have done.

Morning session - £12.00 per session

Lunchtime - £2.00 per session + £1.95 if a hot school meal is required.

Afternoon session - £12.00 per session

We are happy to make changes to sessions on a long term basis but are unable to accommodate changes at short notice or for one off sessions.

‘Amazing things happen here’



Early Education and Childcare for 2 year olds

Some two year olds may be entitled to up to 15 hours per week of early education and childcare if their family is in receipt of certain income based benefits.

If you have received a 'Play and Learning Voucher' you are automatically eligible for 2 year funding and do not need to apply. Please hand this voucher to your childcare provider.

If you have not received a voucher you may still be eligible; you can find out more and apply by visiting www.myearlylearning.co.uk

Early Education and Childcare for 3 & 4 year olds

All three and four year olds get 15 hours of early education per week for 38 weeks a year.

When can my child get their 15 hours?

If your child goes to an Ofsted registered day nursery, preschool, independent school or some childminders, they will get their funding from the start of the term following their third birthday.

30 Hours Childcare

The government has doubled the entitlement to 30 hours a week (for up to 38 weeks a year) from September 2017. This will have a significant and positive impact on families and help make childcare more affordable. The additional hours will be available to working families who meet the criteria.

To find out more information go to www.childcarechoices.gov.uk



Communication and Feedback

We believe that developing a good relationship between home and school is fundamental in supporting a child's learning. Although we don't use communication books, we are very keen to develop a dialogue verbally, and the class teacher is always available at the end of each session to talk to you about what your child has been involved in, or enjoyed doing.

We love to celebrate children's achievements in and out of school and invite parent and carers to complete 'leaves' to celebrate 'wow' moments at home. These are shared with the class and displayed on our 'achievement and celebration tree'.

It is usually best to discuss problems as they arise, so if at any time you have any concerns or queries, please arrange a time to meet with the class teacher. It is best to do this at the end of a session as the class teacher's priority at the start of a session is to settle the children. Please contact the school office either in person or using the contact detail on the front of this brochure.

During your child's first term in nursery you will be invited to a open session so that you and your child can enjoy spending time together in their setting. It also gives you the opportunity to see what your child enjoys doing at nursery and to talk to the staff who are supporting your child.



Refreshments

Drinks

Drinks of water are available throughout the day and milk is available at snack time.

We enjoy snack time together. Snack involves a piece of fruit or a vegetable. We place a big emphasis on snack time as it provides the opportunity to promote personal hygiene through hand washing. We also use snack time to development social skills by encouraging good manners. We encourage interaction as adults and children eat and talk together.



Lunchtime

Children are invited to either bring their own packed lunch or purchase a hot school dinner. School dinners are provided through 'Caterlink' and cost £1.95. To order a school dinner you will need to inform the class teacher and provide payment in a sealed envelope in advance. If your child has specific dietary requirements we ask that you complete a form available from the office so that we ensure that we cater for their specific needs. A sample menu is available on our website to give you an idea of the sorts of dinners that are available.

'Here to help'



Personal Care

Nappies

It is our aim in nursery to develop the children's independence and to support them to be able to manage their own needs. We appreciate that when some children start in our nursery they may not be able to use a toilet independently and may still be in nappies or pull ups. We work closely with parent and carers to support the lead that they have taken.

We ask that parents and carers provide a bag with nappies or pull-ups, wipes and nappy sacks. The children will also need a change of clothes in case of accidents. Pull-ups can provide a good next step in children developing independence when toilet training as it enables them to become familiar with the routine of pulling pants up and down.

Suncream

During the summer months, it is crucial that your child wears sun cream as we spend a lot of time outside. We ask parents and carers to apply sun cream before school and to use a type that lasts all day. Your child will also need a cap to wear outside;

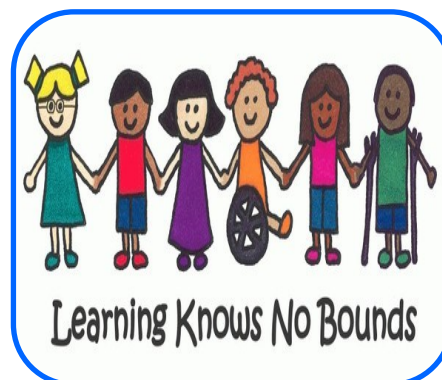
Encouraging independence



Special Educational Needs

All children have individual needs, but at some stage in their school careers a few children may experience difficulties which act as a barrier to their learning capability. These may be considered as Special Educational Needs (SEN).

These children will usually be identified as a result of observations made by the individual class teachers as well as by the regular screening and ongoing assessment procedures established in the school. It is the school's aim to identify the children with special educational needs as early as possible so that they can receive the necessary support and provision. If the class teacher has any concerns about your child's development, they will arrange a meeting to discuss this with you. Equally if you have any concerns, the class teacher will be very keen to meet with you to discuss these.



Learning Knows No Bounds

'Supporting individual needs'



Housekeeping

Reporting Absence

During the nursery years your child is not of statutory school age. However we do ask that you phone or email the school office if your child is off ill. If you know in advance that your child will not be attending one or some of their sessions, please email to let the school office know.

Guidance on Infection Control in School

Public Health England

Illness	Recommended time off school	Comments
Diarrhoea and vomiting	Diarrhoea and or vomiting 48hrs from last episode of diarrhoea or vomiting	
Vomiting or Diarrhoea	24 hrs from the last episode	
Whooping cough	5 days from commencing antibiotic treatment or 21 days from onset of illness if no	Further exclusion may be required for under 5's due to hygiene practices
Conjunctivitis	None	
Glandular Fever	None	
Head lice	None	Treatment required (available from supermarkets and
Mumps	Exclude children for 5 days after onset of swelling	
Threadworms	None	
Tonsillitis	None	
Chickenpox	5 days from onset of rash	Check vulnerable children and staff

‘Working together’



Admissions

Early Years and Foundation

Children can join the nursery class in the term in which they are three years old. Our three and four year old children are entitled to a minimum of five, Government funded sessions a week (15 hours) or 30 hours if eligibility criteria is met. In addition, parents can choose to pay for extra sessions.

Main School

Pupils are admitted to the main school in the September that they become five years old.

All applications to Great Barford Church of England Primary Academy must apply via Bedford Borough. The application forms are available on the Bedford Borough website: www.bedford.gov.uk

We are able to admit 30 children into our reception class. If the number of places in a particular year is not sufficient to meet the applications of all the pupils, Bedford Borough will offer places on the following basis:

Category 1: All 'looked after' children or children who were previously 'looked after' but immediately after being 'looked after' became subject to an adoption, child arrangement or special guardianship order.

Category 2: Children living in the catchment area with siblings at the school.

Category 3: Other pupils living in the catchment area.

Category 4: Children eligible for Early Years Pupil Premium, Pupil Premium or Service Premium Funding who currently attend Great Barford Church of England Primary Academy nursery class.

Category 5: Other children with siblings at the school.



‘Amazing things happen here’



‘Growing together through friendship, learning and worship’