



# **Great Barford Church of England Primary Academy**



**'Growing together through learning, friendship and worship'**

## **Great Barford Church of England Primary Academy**

Silver Street  
Great Barford  
Beds MK44 3HZ

**Telephone:** 01234 870342

**Nursery to Year 6**

**Head Teacher:**

Mrs S Evans

**Chair of Governors:**

Mrs A Lovesey

**Website:** [www.gbpa.org.uk](http://www.gbpa.org.uk)

**Email:** [admin@gbpa.org.uk](mailto:admin@gbpa.org.uk)

# Welcome to Our School

‘Growing together through learning, friendship and worship’

**Welcome to our school brochure. We hope that you find it a useful source of information as well as an introduction to the many and varied experiences enjoyed at Great Barford Church of England Primary Academy.**

**Mrs S Evans  
Head Teacher**



In June 2017 we became a Primary Academy and joined Unity Church of England Multi Academy Trust. In 2018 we became a Church of England school as well as welcoming our first Year 5 and Year 6 cohorts. We have expanded our campus to include our specialist teaching areas and a training facility enabling us to offer our children enhanced opportunities.

At GBPA we recognise that we have a very important role in developing the whole child, instilling through our vibrant and exciting curriculum a life-long love of learning.

All of our staff are highly trained and experienced primary practitioners specialising in Early years, Key stage 1 and Key stage 2. Our teachers deliver the full National Curriculum. We believe wholeheartedly in life long learning for all. All of our staff engage in a rigorous programme of professional development, linked to the needs of our school.

We take our role in guiding and supporting our children on this very important education journey, very seriously. We recognise that not everyone learns in the same way and we work with every child to help them to understand how they learn best in order for them to achieve their full potential.

Thank you for taking the time to read our school brochure. If you require any further information please visit our website at [www.gbpa.org.uk](http://www.gbpa.org.uk) or contact me or one of the team by phone on 01234 870342.

# Attendance

‘Growing together through learning, friendship and worship’

The following data shows the attendance data for 2017- 2018

Total Attendance	Authorised Absence	Unauthorised Absence
95.6	3.4	0.6

## Action required if your child is absent

Contact the school with the following information before 9.30am

- Your child's name and class
- Reason for your child's absence from school
- When you expect your child to return to school.
- If you child is off for more than 2 days please phone the school again.
- When your child returns to school, please write a letter or send an e-mail outlining the reason for their absence.

## WAYS FOR PARENTS TO PROMOTE REGULAR ATTENDANCE

- **Phone school** as soon as possible as to the reason why your child is absent from school and when you expect them to return to school, or we will phone you later to follow up.
- Putting the school number in your phone, it will save you time.
- **Only grant days** at home for genuine illness. (you will know!) Send them to school and if they feel ill at school we will send them home.
- **Miracle Recovery**—If your child improves after the school day has started, we are happy for you to bring them into school at anytime during the day.
- **Avoid taking holidays** in term time, they will not be authorised.
- **Avoid Medical /Dental Appointments** in term time where possible.
- **Know the routine** of the day to avoid issues e.g. have they got their PE kit and everything they need for the day.
- **Concerns for the day** - if your child is worried about coming into school for any reason, talk to a member of staff and we will try and help.

# About Our School

‘Growing together through learning, friendship and worship’

## Curriculum Enhancement

**The curriculum we offer at Great Barford Church of England Primary Academy is enhanced with a wide variety of opportunities for all the children.**

We are proud of the facilities that we offer our children. We have dedicated areas and resources for specific subjects. We have a science lab, an art room, a food technology room, an ICT suite and a music room with individual practice rooms.

We have a creative and exciting curriculum offering the children the opportunity to explore the world in which they live, as well as learning about the past. They also develop skills that will prepare them for the future in our ever changing world.

We believe in providing a wide range of experiences to stimulate learning. This includes visitors and trips to supplement the high quality teaching experiences the children enjoy.

## Enrichment Activities

**Here at Great Barford Church of England Primary Academy we work closely with the local community supporting village businesses and events.**

We work closely with the local community, regularly visiting and supporting All Saints Church, Great Barford. We regularly visit Jordan's Close activity centre, enjoying the outdoor environment, including the river and taking part in outdoor and adventurous activities.

We also work collaboratively with other local schools taking part in the annual 'Sing On' event run by the Bedford Music Hub. as well as taking part in the East Beds Partnership sporting events. Each year we enter tag rugby, athletics, football and cricket tournaments and festivals.

Great Barford Primary Academy also offers clubs run by professional instructors and teachers during and after school. They include: gymnastics, football, choir, dance, computer and multi-skills.

# The School Day

‘Growing together through learning, friendship and worship’

The school day starts at 8.55am. The gates open at 8.30am, and the doors open at 8.45am. It is important that children are punctual. Children in EYFS must be supervised by an adult before they enter the school.

	Nursery	Reception	Key Stage 1	Key Stage 2
Start of School	8.45am	8.55am	8.55am	8.55am
Morning Session	8.45 -11.45am	8.55am	8.55am	8.55am
Break Time	N/A	N/A	10.30am	10.45am
Lunch Time	11.45am – 12.15pm	11.45am	11.45am	12.15am
Afternoon Session	12.15 – 3.15pm	1.00 - 3.15pm	12.45 - 3.20pm	1.15-3.20pm
End of School	3.15pm	3.15pm	3.20pm	3.20pm

## Wrap around Care and Holiday Club

We offer wrap around care to all children who attend Great Barford Church of England Primary Academy children.

Holiday club is available during all school holidays except Christmas. Places must be booked in advance. For further information please contact Mrs L Shuttleworth on 01234 870342.

	Age Group	Times	Cost
Breakfast Club	2yrs 9months -12yrs	7.45am -8.45am	£4.00
Lunch Club	2yr 9months – 4yrs	11.45am – 12.15pm	£2.00
After School Club	2yrs 9months -12yrs	3.15pm – 6.00pm	£4.00/hr
Holiday Club	3 yrs – 12yrs	8.00am – 6.00pm	£3.50/hr or 4hr for £10, £24 for full day

# Class Organisation

‘Growing together through learning, friendship and worship’

Key Stage	Year Group (KS2)	Class Name	Staff	Ages
EYFS	Nursery	Ducklings	Mrs Day Miss Turnbull Mrs Adams Mrs Marshall	2yrs 9 months – 4years
EYFS	Reception	Robins	Mrs Buckingham Mrs Cuccurullo	4+ - 5 years
EYFS	Reception	Doves	Mr Allcorn Mrs Pickard	4+ - 5 years
Key stage1 (KS1)	Year 1	Owls	Mrs Fuller Mrs Crusco Mrs Sheath	5+ -6 years
Key Stage 1 (KS1)	Year 2	Puffins	Mrs Campbell ( on maternity leave) Mrs Brown Mrs Donnelly	6+ - 7 years
Key Stage 2 (KS2)	Year 3	Woodpeckers	Mrs Browning Miss Caves	7+ - 8years
Key Stage 2 (KS2)	Year 4	Swans	Mrs Criddle Mrs Campbell	8+ - 9 years
Key Stage 2 (KS2)	Year 5	Kestrels	Mrs Humphrey Mrs Follington	9+ - 10 years
Key stage 2 (KS2)	Year 6	Falcons	Mrs Barrows Miss Goldsmith	10+ - 11 years
Key Stage 2 (KS2)	Year 6	Kites	Miss Smith Miss Smith	10+ - 11 years
Key Stage (KS2)	Year 6	Sparrow Hawks	Mr Cowling Mrs Khan	10+ - 11 years

# Food and Drink

‘Growing together through learning, friendship and worship’

## Fruit

Great Barford Primary Academy takes advantage of the Government’s ‘Fruit and Vegetable Scheme’. Children in EYFS and KS1 all have a free piece of fruit or vegetable each day as a snack. Children KS2 are encouraged to bring in a fruit snack daily.

## Drink

Children in the Nursery and Year R have milk and water available to them throughout the day.

Children in KS1 and KS2 are encouraged to bring a water bottle from home. It has been proven that hydrated children find it easier to concentrate and pay attention in class.

## Lunch

Great Barford Primary Academy is proud to be able to offer hot school meals to all children.

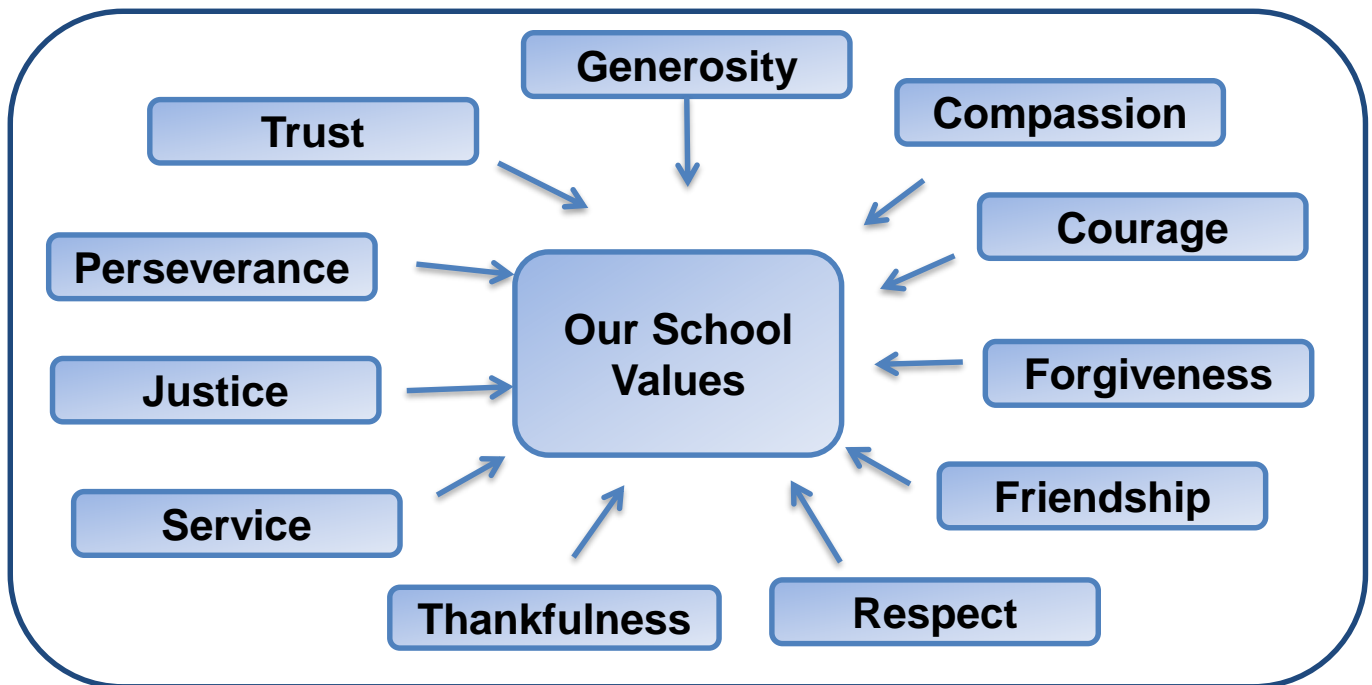
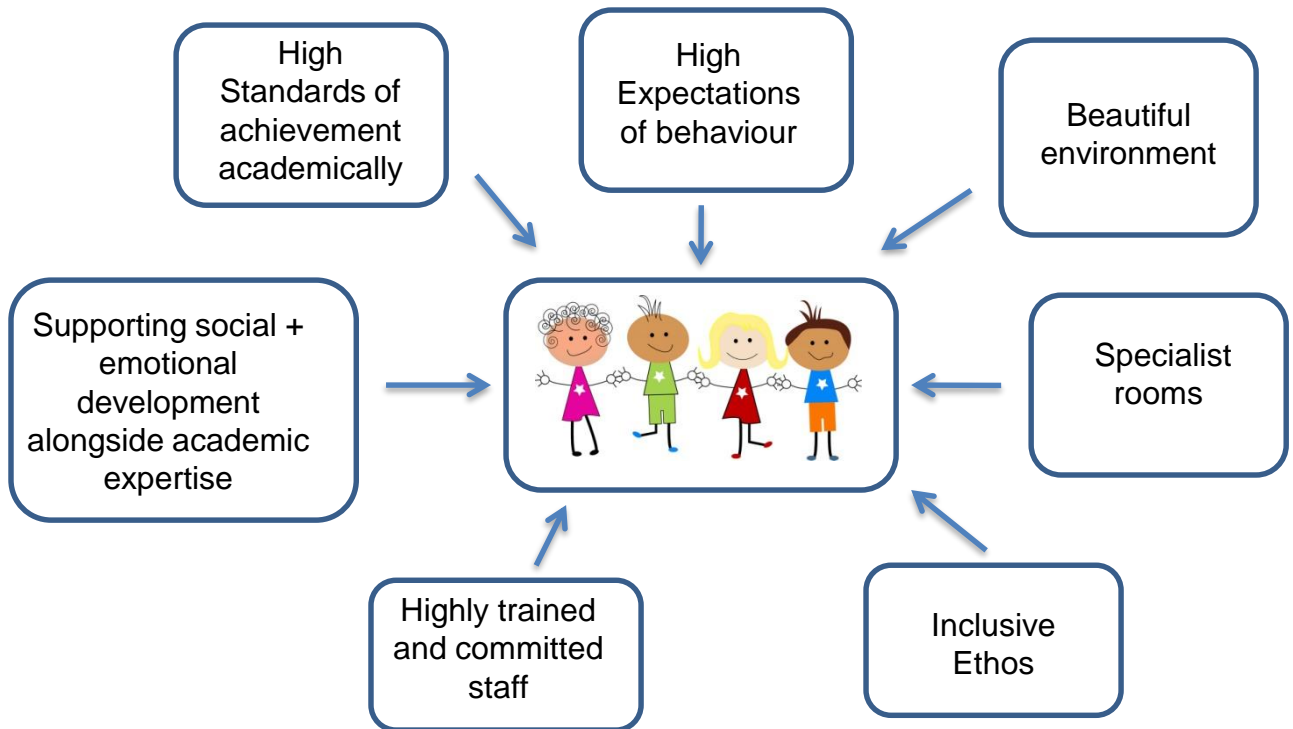
All meals are freshly cooked to a high standard. We also cater for all specific dietary needs, just ensure the school is aware of your child’s needs.

Children in Year R, Year 1 and Year 2 are entitled to ‘Universal Free School Meals’: a Government scheme to ensure all children have an opportunity to have a hot meal during the day.

Children in KS2 can also have a school meal for £2.10 per day, these can be ordered on a daily basis. All school meals must be paid for in advance. If you think you might be entitled to a free school meal based on your financial situation, please complete a form available from the school office or download from the school website.

# Our Aims & Values

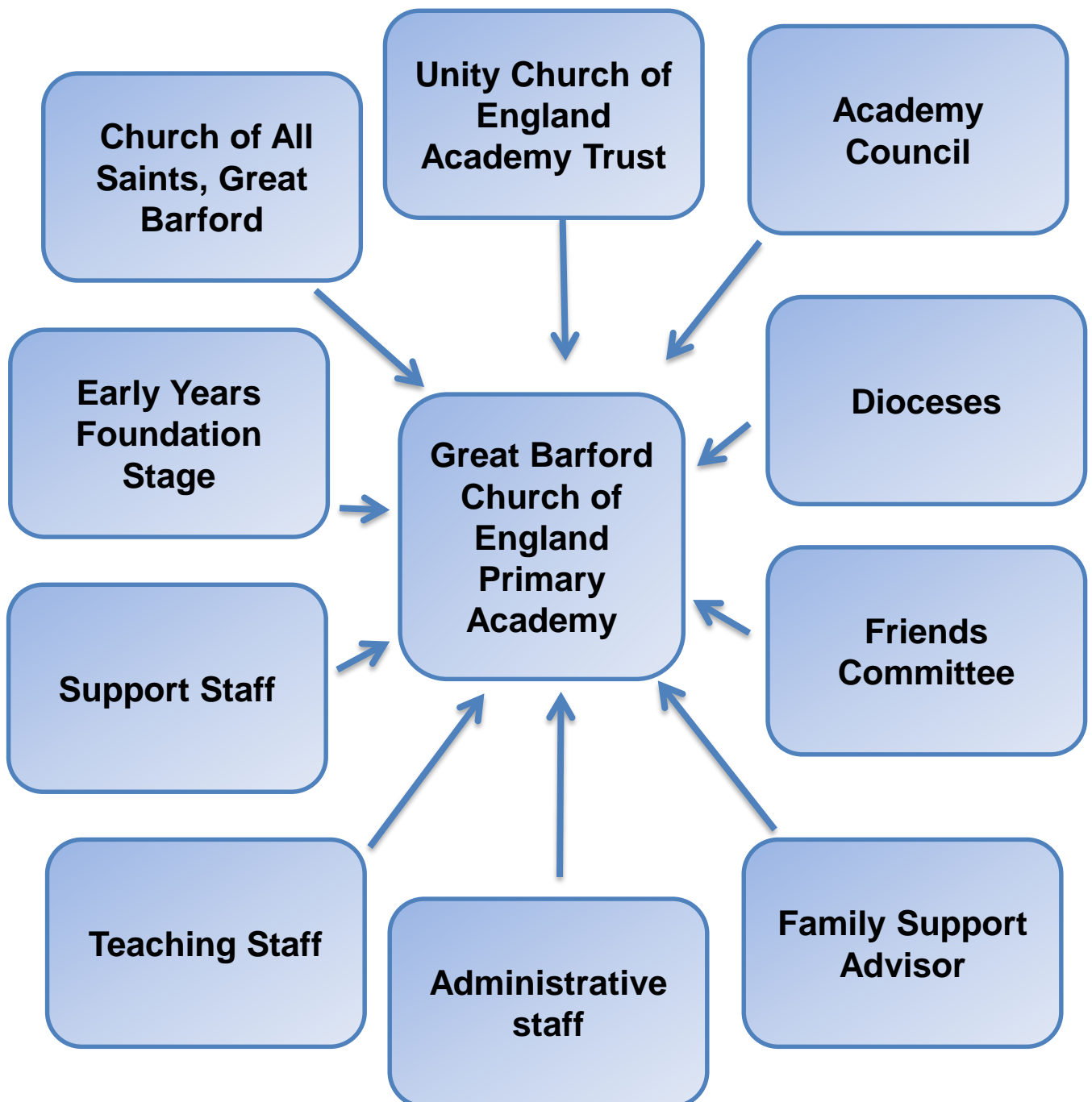
‘Growing together through learning, friendship and worship’





# School Support and Community Links

‘Growing together through learning, friendship and worship’



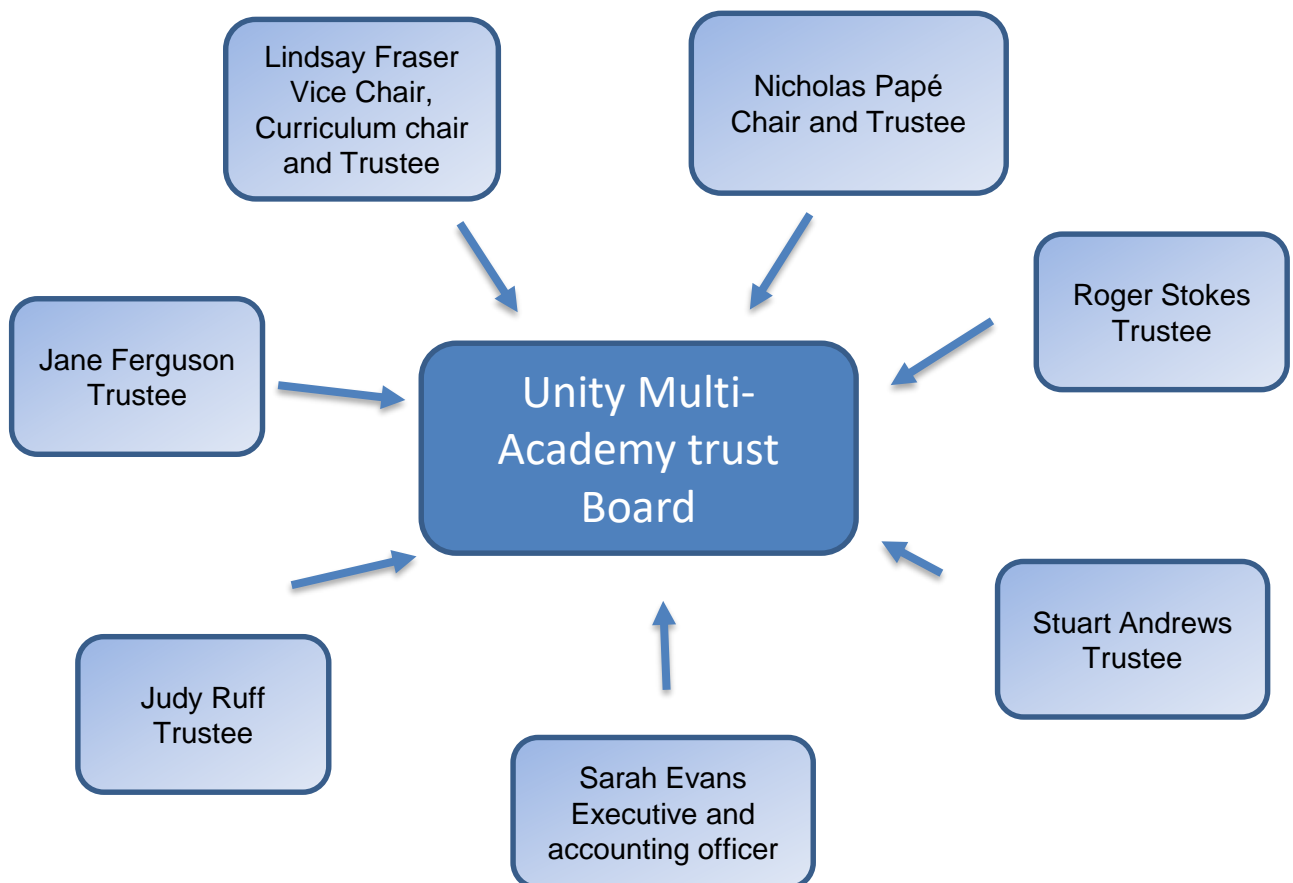
# Unity Multi-Academy Trust

‘Growing together through learning, friendship and worship’

The Unity Church of England Multi-Academy Trust formed in November 2017. Their vision statement is to provide children of all faith and none, with excellent educational provision within a caring and supportive ethos that supports Christian values.

Each school within the MAT will be unique and distinctive. We are committed to celebrating the local context and purpose of each school. Our vision is for all our schools to become high quality centres of learning. This will be achieved through:

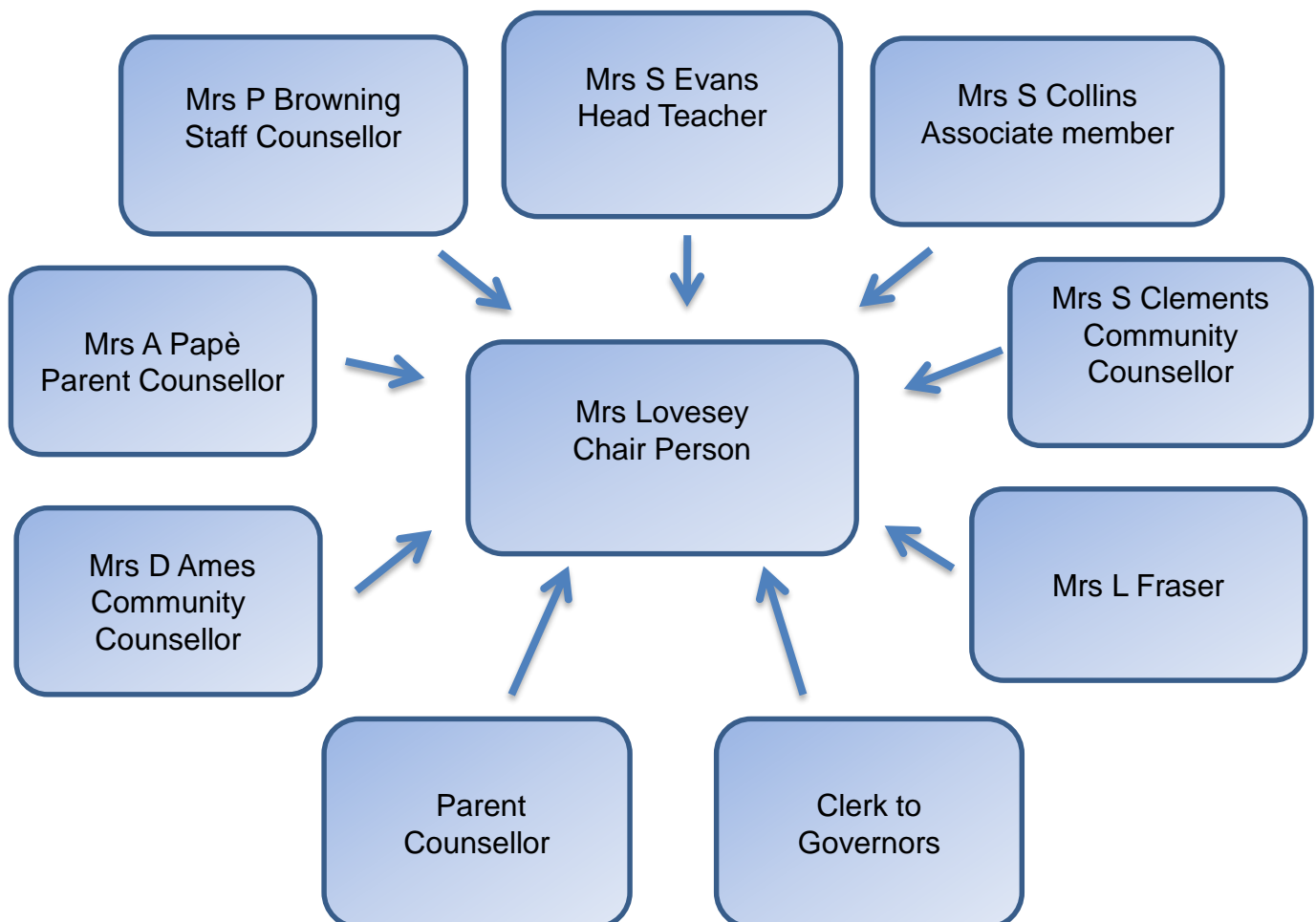
Collaboration supporting: Mutual support, Mutual Respect and Multi Accountability



# Academy Council

Growing together through learning, friendship and worship'

The Academy Council is responsible for working with the school to ensure that it delivers a high quality education, offering support and challenge to the staff.



## **Friends**

**'Growing together through Learning, friendship and worship'**

Great Barford Primary Academy has a very supportive Friends committee which all parents and staff are automatically members of. The association aims to support the work of the school and provide both opportunities and resources to benefit all pupils. Being on the committee is fun and can be a great way to make new friends and become more involved within the school.

### **Friends Committee**

Tracey Ellis  
Vice Chair

Saran Hutton  
Chair

Kerry Affedlt  
Vice Chair

Claire Hoskins  
Blount  
Secretary

Lynsey Jones

# Admission Arrangements

Growing together through learning, friendship and worship'

## The Nursery

Children can join the nursery class in the term in which they are three years old. Our three and four year old children are entitled to five Government funded sessions a week 15 hours or 30 hours if eligibility is met. In addition, parents can choose to pay for extra sessions. The morning sessions run from 8.45am until 11.45am and the afternoon sessions from 12.15pm until 3.15pm. Children may also stay for lunch club (11.45am-12.15pm). A packed lunch will need to be provided, alternatively a school lunch is available for £1.85. A nursery admission form is available from the school office or on the website.

## Main School

Pupils are admitted to the main school in the September that they become five years old.

All applications to Great Barford Church of England Primary Academy must apply via Bedford Borough. The application forms are available on the Bedford Borough website: [www.bedford.gov.uk](http://www.bedford.gov.uk)

We are able to admit 30 children into our reception class. If the number of places in a particular year is not sufficient to meet the applications of all the pupils, Bedford Borough will offer places on the following basis:

*Category 1: All 'looked after' children or children who were previously 'looked after' but immediately after being 'looked after' became subject to an adoption, child arrangement or special guardianship order.*

*Category 2: Children living in the catchment area with siblings at the school.*

*Category 3: Other pupils living in the catchment area.*

*Category 4: Children eligible for Early Years Pupil Premium, Pupil Premium or Service Premium Funding who currently attend Great Barford Church of England Primary Academy nursery class.*

*Category 5: Other children with siblings at the school.*

**For your notes**

[illegible]

For your notes

[illegible]





**This is what makes Great Barford Church of England Primary Academy GREAT**

