

Great Barford Primary Academy

Silver Street
Great Barford
Beds MK44 3JU

Telephone: 01234 870342

Nursery to Year 4

Head Teacher:
Mrs Sarah Evans

Chair of Governors:
Mrs Sarah Clements

Website: www.greatbarford.beds.sch.uk

Email: admin@gbpa.org.uk

Our Values Inukshuk represents how our values fit together, to build a strong and healthy community.



**Welcome to
Our School**

Welcome to our school brochure. We hope that you find it a useful source of information as well as an introduction to the many and varied experiences enjoyed at Great Barford Primary Academy.

**Sarah Evans
Head Teacher**



In June 2017 we became a primary academy and joined Unity Church of England Multi Academy Trust. In 2018 we look forward to becoming a church of England school as well as welcoming our first year 5 and 6 cohort. We will also expand our campus to include our specialist teaching areas and a training facility enabling us to offer our children enhanced opportunities.

At GBPA we recognise that we have a very important role in developing the whole child, instilling through our vibrant and exciting curriculum and a life, long, love of learning celebrating successes both within and outside of school.

All of our staff are highly trained and experienced primary practitioners specialising in early years, Key stage 1 and Key stage 2. Our teachers deliver the full national curriculum. We believe wholeheartedly in a life long learning for all. All of our staff engage in a rigorous programme of professional development linked to the needs of our school.

We take our role in guiding and supporting our children from on this very important education journey very seriously. We recognise that not everyone learns in the same way and we work with every child to help them to understand how they learn best in order for them to achieve their full potential.

Thank you for taking the time to read our school brochure. If you require any further information please visit our website at www.greatbarford.beds.sch.uk or contact me or one of the team by phone on 01234 870342.



Attendance

The following data shows the attendance data for 2016- 2017

Total Attendance	Authorised Absence	Unauthorised Absence
96.5%	3.2%	0.3%

Action required if your child is absent

Contact the school with the following information before 9.30am

- Your child's name and class
- Reason for your child's absence from school
- When you expect your child to return to school.
- If you child is off for more than 2 days please phone the school again.
- When your child returns to school please write a letter outlining the reason for their absence.

WAYS FOR PARENTS TO PROMOTE REGULAR ATTENDANCE

- **Phone school** as soon as possible as to the reason why your child is absent from school and when you expect them to return to school or we will phone you later to follow up
- Putting the school number in your phone, it will save you time.
- **Only grant days** at home for genuine illness. (you will know!) Send them to school and if they are really ill we will send them home.
- **Miracle Recovery**—If your child improves after the school day has started we are happy for you to bring them into school at anytime during the day.
- **Avoid taking holidays** in term time, they will not be authorised.
- **Avoid Medical /Dental Appointments** in term time where possible.
- **Know the routine** of the day to avoid issues e.g. have they got their PE kit and everything they need for the day.
- **Concerns for the day** - if your child is worried about coming into school for any reasons talk to a member of staff and we will try and help.



About Our School

Curriculum Enhancement

The curriculum we offer at Great Barford Primary Academy is enhanced with a wide variety of opportunities for all the children.

We are proud of the facilities that we offer our children. We have dedicated areas and resources for specific subjects. We have a maths area, a dedicated wet area to enable children to express their artistic skills as well as a music room for both individual peripatetic lessons and group musical activities. We are also very fortunate to have a well resourced food technology room.

We have a creative and exciting curriculum offering the children the opportunity to explore the world in which they live and learn about the past. They develop skills that will prepare them for the future in our ever changing world.

We believe in providing a wide range of learning experiences to stimulate and develop a life long love of learning. This includes visitors and trips to supplement the high quality teaching experiences the children enjoy.

Enrichment Activities

Here at Great Barford we work closely with the local community supporting village businesses and events.

We work closely with the local community regularly visiting and supporting All Saints Church, Great Barford. Each term we visit Jordan's Close activity centre enjoying the outdoor environment including the river taking part in outdoor and adventurous activities.

We also work collaboratively with other schools taking part in the annual 'Sing On' event run by the Bedford Music Hub. as well as taking part in the East Beds Partnership sporting events entering tag rugby, athletics, football and cricket tournaments. We are also taking part in the Bedford Blues reading and rugby initiative.

Great Barford Primary Academy also offers clubs run by professional instructors and teachers during and after school. They include gymnastics, football, marathon club, choir, writing and drawing club.



The school day starts at 8.55am and doors open at 8.45am. It is important that children are punctual. Children must be supervised by an adult before they enter the school.

	Nursery	Reception	Key Stage 1	Key Stage 2
Start of School	8.45	8.55	8.55	8.55
Morning Session	8.45 -11.45	8.55	8.55	8.55
Break Time	N/A	N/A	10.30	10.45
Lunch Time	11.45 – 12.15	11.45	11.45	12.15
Afternoon Session	12.15 – 3.15	1.00 - 3.15	12.45 - 3.20	1.15-3.20
End of School	3.15	3.15	3.20	3.20

Wrap around Care and Holiday Club

We offer wrap around care to both Great Barford Primary Academy children and those who attend Alban Academy.

Holiday club is available during all school holidays except Christmas.

Places must be booked in advance. For further information please contact the school office on 01234 870342.

	Age Group	Times	Cost
Breakfast Club	2yrs 9months -12yrs	7.45 -8.45	£4.00
Lunch Club	2yr 9months – 4yrs	11.45 – 12.15	£2.00
After School Club	2yrs 9months -12yrs	3.15 – 6	£4.00/hr
Holiday Club	3 yrs – 12yrs	8 – 6	£3.50/hr or 4hr for £10, £24 for full day



Key Stage	Year Group	Class Names	Staff	Ages
Nursery	Nursery	Wrens	Mrs Baigent Mrs Adams Miss Turnbull Mrs Marshall	2 yrs 9 months - 4 years
Reception	Reception	Robins	Mrs Buckingham Mrs Pickard Mrs Shuttleworth Mrs Cuccurullo	4+ - 5 years
Key Stage 1 (KS1)	Year 1	Owls	Mrs Fuller Mrs Pottruff Mrs Ahern Mrs Crusco Mrs Sheath	5+ -6 years
Key Stage 1 (KS1)	Year 2	Puffins	Miss Wyatt Mrs Donnelly	6+ - 7 years
Key Stage 2	Year 3	Woodpeckers	Mrs Browning Mrs Pottruff Mrs Jackson Miss Caves	7+ -8 Years
Key Stage 2 (KS2)	Year 4	Eagles	Mrs Collins Miss Ratcliffe Mrs Pottruff Mrs Campbell	8+ - 9 years



Food and Drink

Fruit

Great Barford Primary Academy takes advantage of the Government's 'Fruit and Vegetable Scheme'. Wrens, Robins, Owls and Puffins all have a free piece of fruit or vegetable each day as a snack. Children in Eagles and Woodpeckers are encouraged to bring in a fruit snack daily.

Drink

Children in the Wrens and Robins have milk and water available to them throughout the day.

In Owls, Penguins, Puffins, Woodpeckers and Eagles the children all have water bottles in their classrooms. It has been proven that hydrated children find it easier to concentrate and pay attention in class.

Lunch

Great Barford Primary Academy is proud to be able to offer hot school meals to all children.

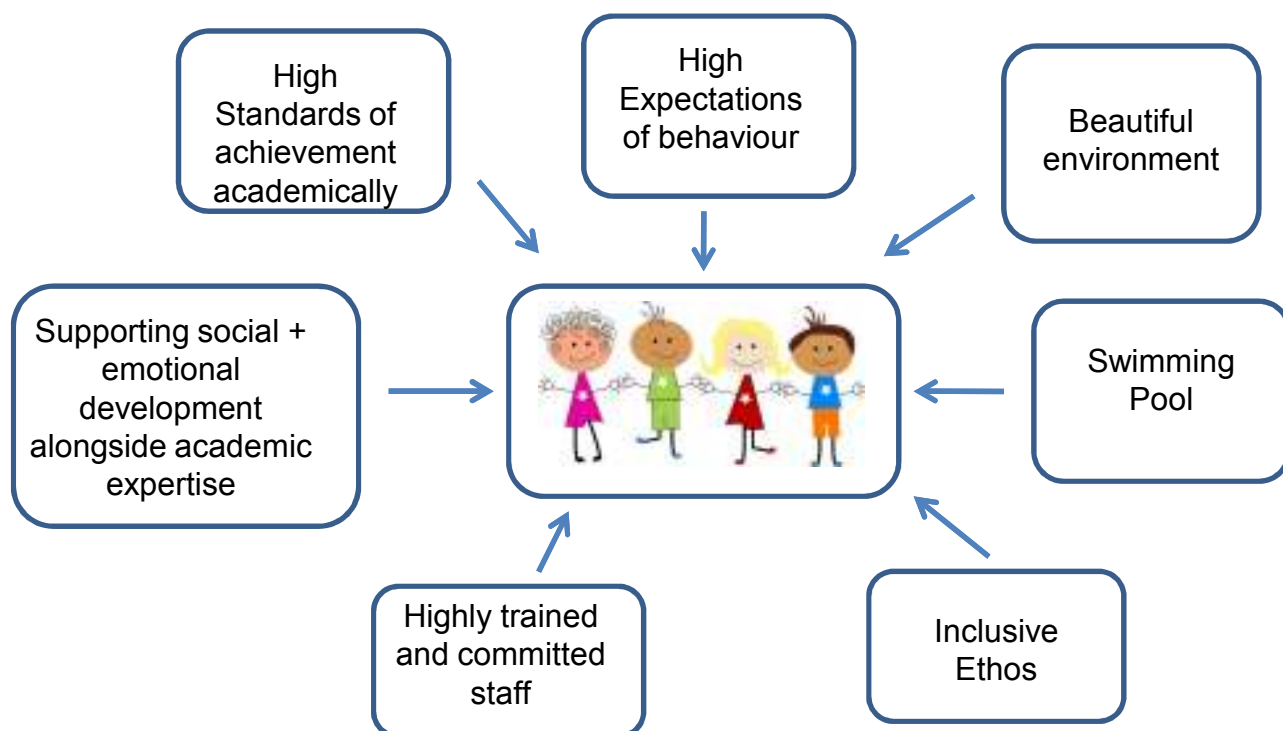
All meals are cooked freshly to a very high standard. We also cater for all specific dietary needs, just ensure the school is aware of your child's needs.

Children in Robins, Owls and Puffins are entitled to 'Universal Free School Meals', a Government scheme to ensure all children have an opportunity to have a hot meal during the day.

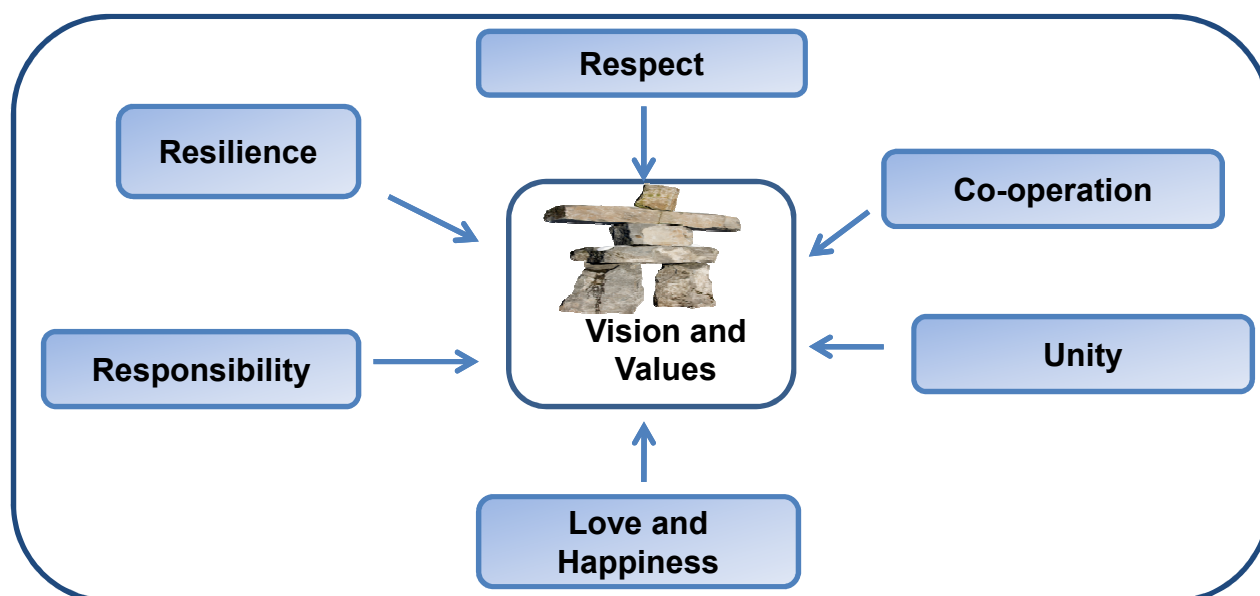
Children in Woodpeckers and Eagles can also have a school meal for £2.15 per day, these can be ordered on a daily basis. All school meals must be paid for in advance. If you think you might be entitled to a free school meal based on your financial situation please complete a form available from the school office or download from the school website.



Our WOW Factor

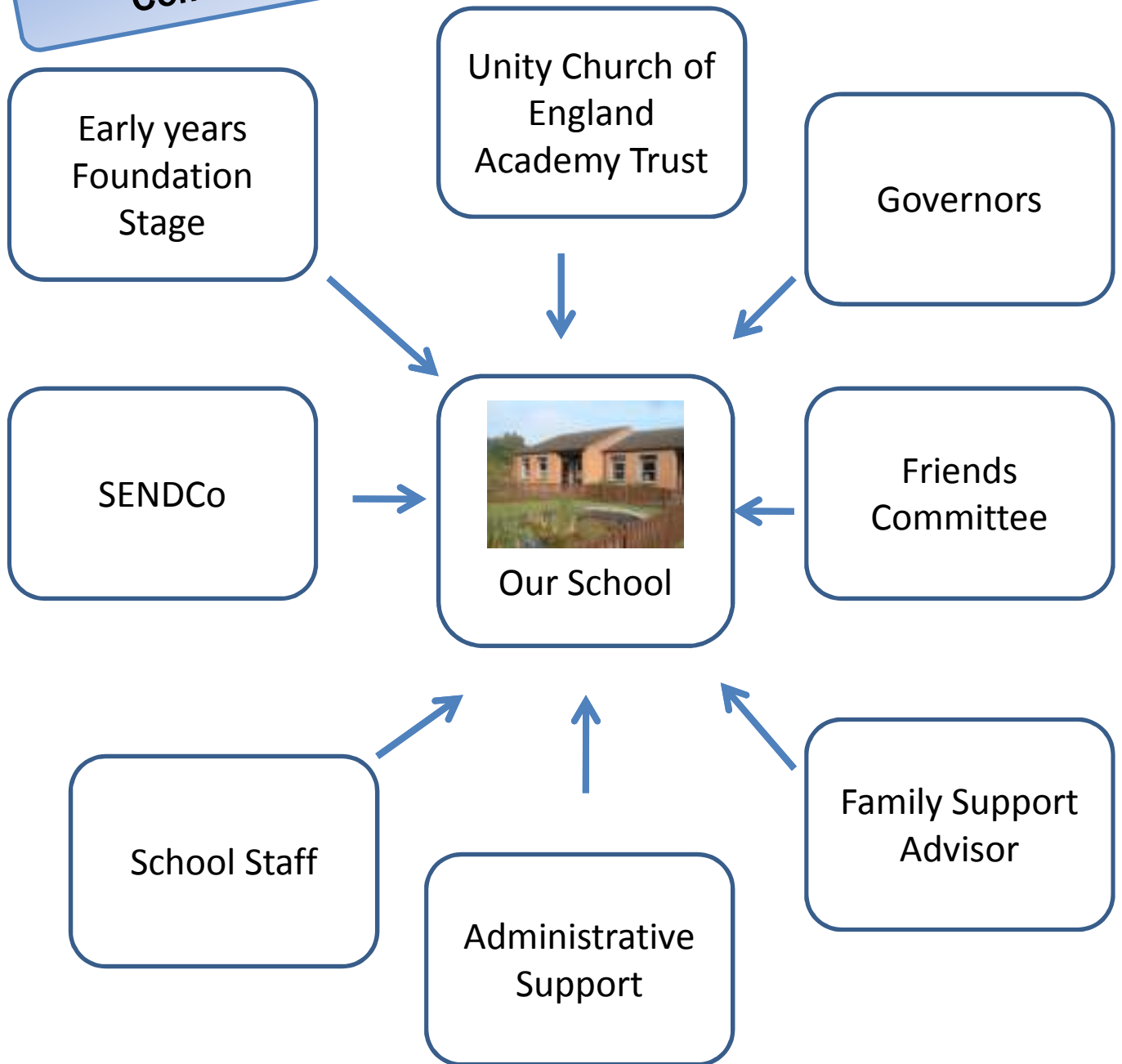


Great Barford Lower School Vision and Values





**School Support and
Community Links**





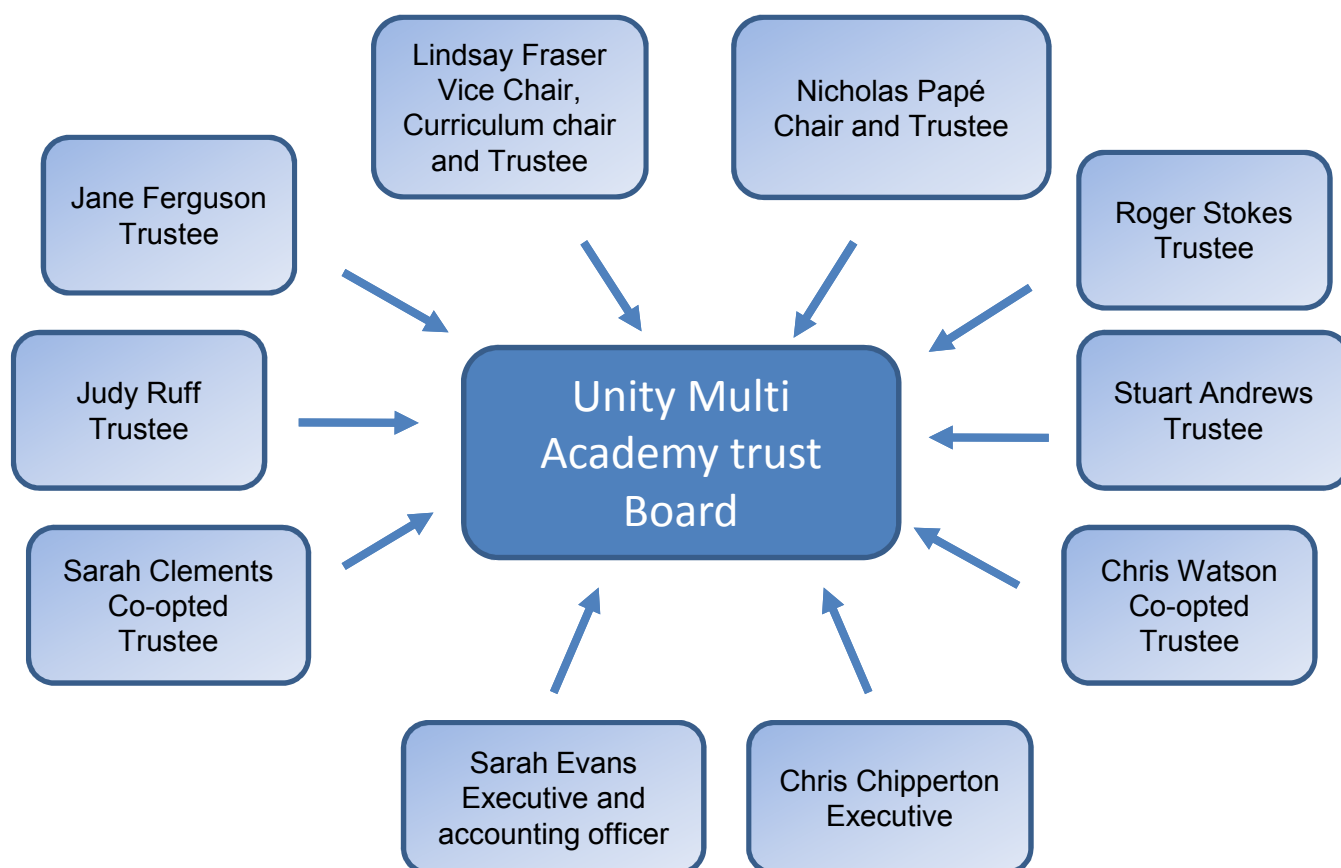
Unity Multi-Academy Trust

The Unity Church of England Multi-Academy Trust formed in November 2017. Their vision statement is to provide children of all faith and none, with excellent educational provision within a caring and supportive ethos that supports Christian values.

Each school within the MAT will be unique and distinctive. We are committed to celebrating the local context and purpose of each school. Our vision is for all our schools to become high quality centres of learning. This will be achieved through:

Collaboration supporting:

Mutual support
Mutual Respect
Multi Accountability
Website details

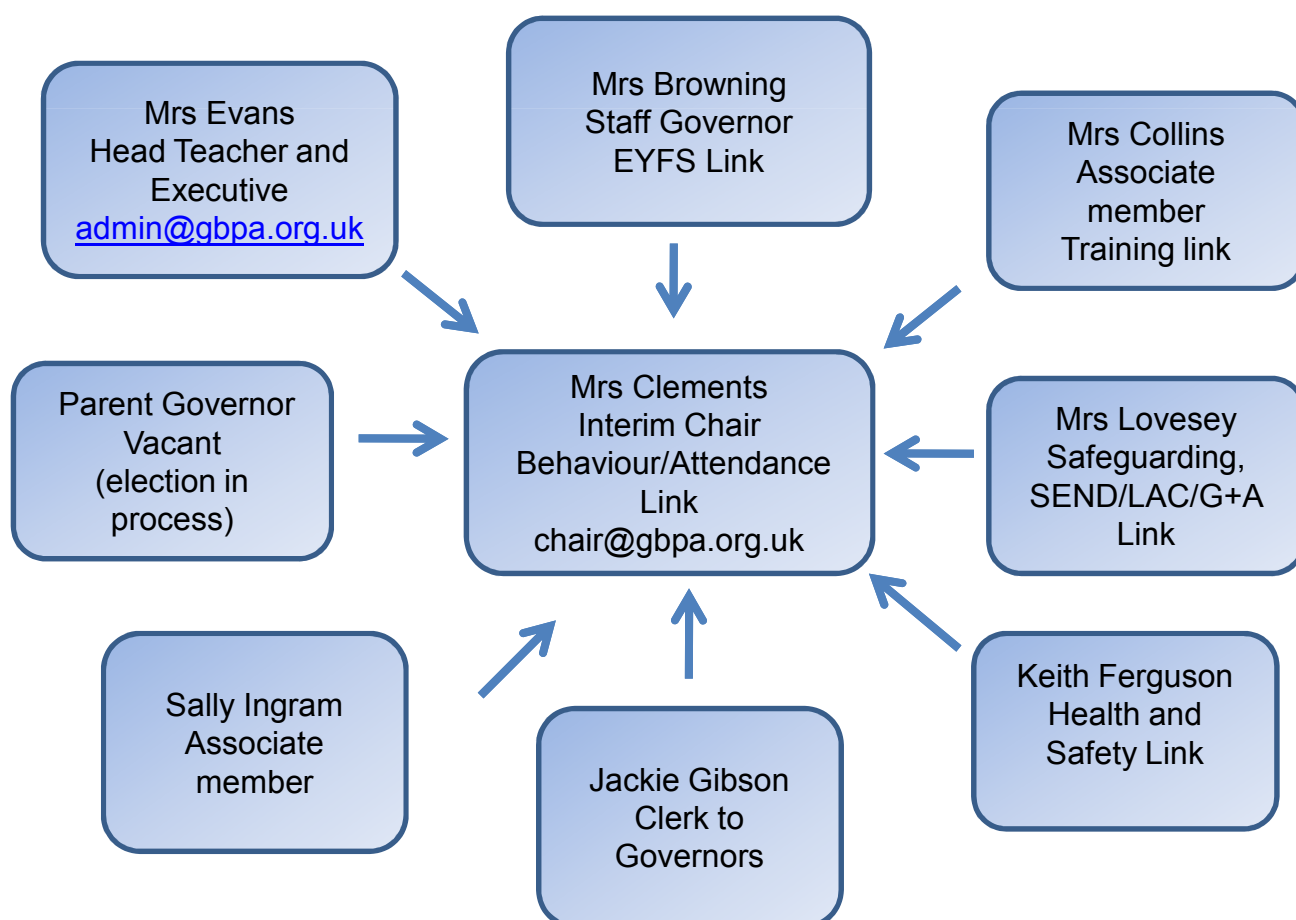




The People who Help us

The governing body is responsible for working with the school to ensure that it delivers a high quality education, offering support and challenge to the staff.

Governing Committee

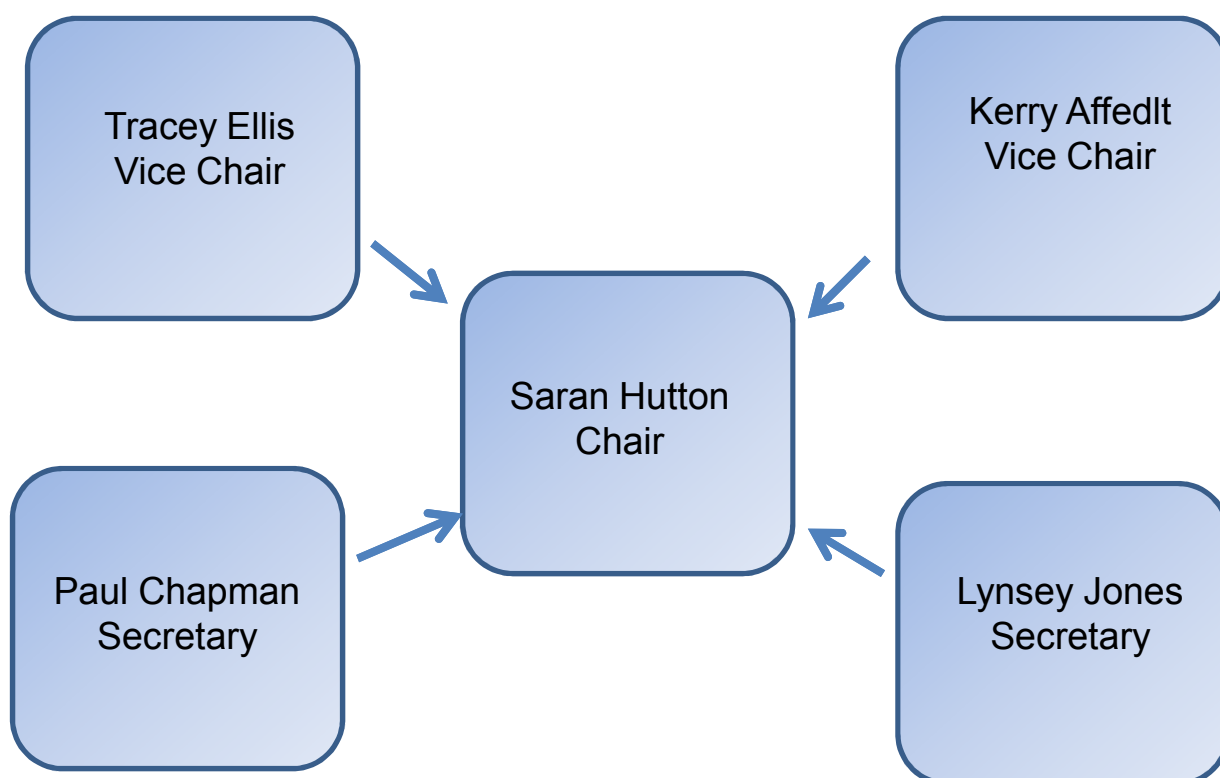




Friends

Great Barford Primary Academy has a very supportive Friends committee which all parents and staff are automatically members of. The association aims to support the work of the school and provide both opportunities and resources to benefit all pupils. Being on the committee is fun and can be a great way to make new friends and become more involved within the school.

Friends Committee





The Nursery

Children can join the nursery class in the term in which they are three years old. Our three and four year old children are entitled to five Government funded sessions a week (15 hours). In addition, parents can choose to pay for extra sessions. The morning sessions run from 8.45am until 11.45am and the afternoon sessions from 12.15pm until 3.15pm. Children may also stay for lunch club (11.45am-12.15pm). A packed lunch will need to be provided alternatively a school lunch is available for £1.85. A nursery admission form is available from the school office or on the website.

Main School

We are able to admit pupils to the main school in the September that they become five years old.

Parents interested in applying to Great Barford Primary Academy must apply via Bedford Borough. The application forms are available via the Bedford Borough website: www.bedford.gov.uk.

If you are applying for your child to join Great Barford Primary Academy mid-year you will need to complete the appropriate application form, also found on the Bedford Borough website: www.bedford.gov.uk.

We are able to admit up to 30 pupils in any one year group. If the number of places in a particular year is not sufficient to meet the applications of all the pupils, Bedford Borough will offer places according to our 2018 Admissions policy criteria:

- All 'looked after' children
- Pupils living in the catchment area with siblings at the school
- Other pupils living in the catchment area
- 'Very exceptional' medical grounds
- Other siblings
- Any other children



Fulfilling the
potential of every
CHILD

[illegible]



Fulfilling the
potential of every
CHILD

This image shows a blank sheet of white paper with horizontal ruling lines. The lines are evenly spaced and run across the width of the page. There is no handwriting or other markings on the paper.



This is what makes Great Barford Primary Academy GREAT!!!!

